

Oasis 3-Piece, 48-inch Shower Compartment With ActivLife (HUD/FHA Fair Housing Act Design Manual) Reinforcement Package

48-inch / Private Access / Reinforced Only



Specification – Oasis 3-piece FRP gelcoat shower compartment, SH3P-4832, offered in a standard 4-inch or 6-inch (ABF) dam configuration. ActivLife package includes factory-applied reinforcement, in compliance with HUD/FHA Fair Housing Act Design Manual, shall include back wall and both side wall reinforcement for horizontal bar application.

Standards Certification:

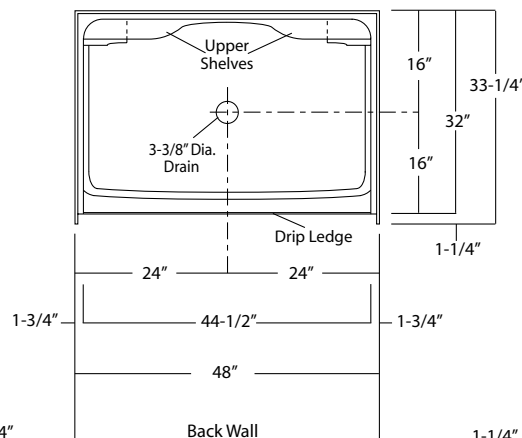
The shower compartment listed is manufactured in compliance with ANSI Z124 Standards, and certified through an ongoing, independent quality assurance and testing program.



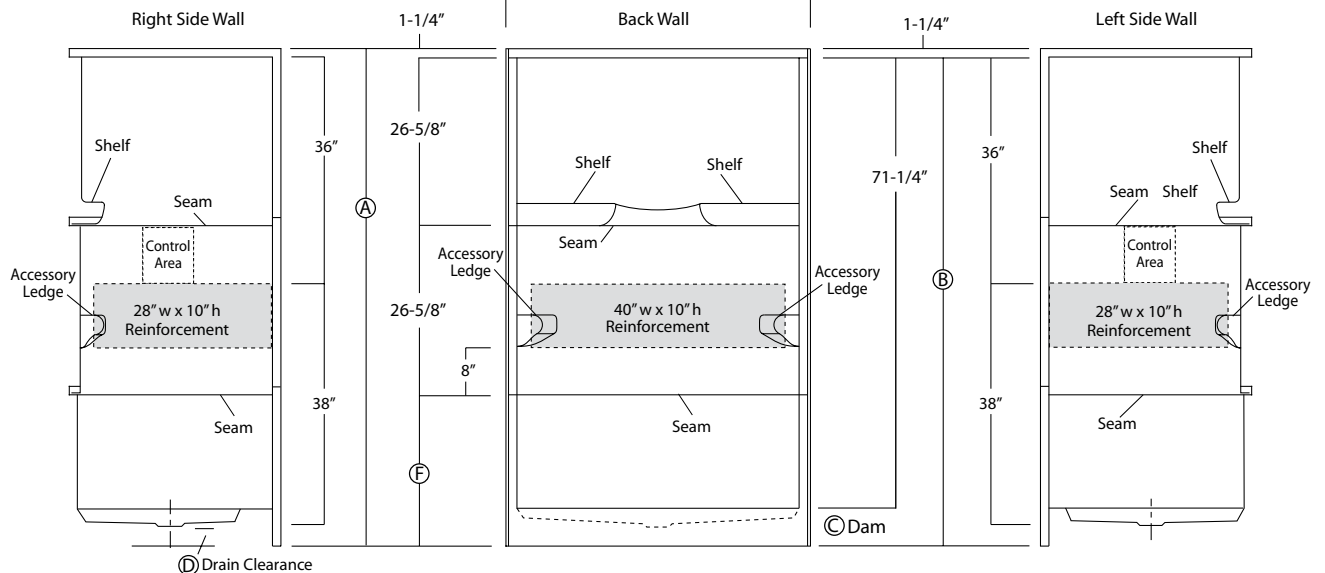
SH3P-4832 / FH
(Fair Housing reinforced)
Model & Package Illustrated



	Std Unit	ABF Unit
A	76-1/2"	78-1/2"
B	75-1/4"	77-1/4"
C	4"	6"
D	1"	3"
E	-	-
F	22"	24"



Enclosure Size:
44-1/2" w (max) x 71-1/4" h (max)



Dimensions shown are maximum. Due to the nature of the materials involved, actual unit dimensions can vary (tolerances: +0 / -3/8 inch). Oasis reserves the right to modify or discontinue product and/or associated equipment without prior written or verbal notification or obligation.

Model ID	Package Code	Description
----------	--------------	-------------

SH3P-4832 (Std or ABF)	/ FH	48" x 32", 3-piece, center drain shower with 4" (std) or 6" (ABF) dam and ActivLife 3-wall horizontal bar reinforcement only package.
------------------------	------	---

Package Notes:

1. Model available without listed package.
2. For expanded reinforcement package options (with or without package components), see ActivLife "3SM" and "3SF" package codes.
3. Model available with single-bar, 2-bar, or 3-bar packages, see ActivLife "BP1", "BP2", "BP3", and "BP5" package codes.
4. Model available with bar and seat packages, see ActivLife "TL" and "TLV" package codes.

