

Oasis 48-inch Shower Compartment With ActivLife 3-Wall Full Reinforcement Wrap Package



Specification – Oasis one-piece FRP gelcoat shower compartment SH-4836, offered in a standard 4-inch or 6-inch (ABF) dam configuration. ActivLife package includes factory applied, 3-wall, full-wrap reinforcement, exceeding (HUD/FHA) 'Fair Housing' requirements.

Standards Certification:

The shower compartment listed is manufactured in compliance with ANSI Z124 Standards, and certified through an ongoing, independent quality assurance and testing program.

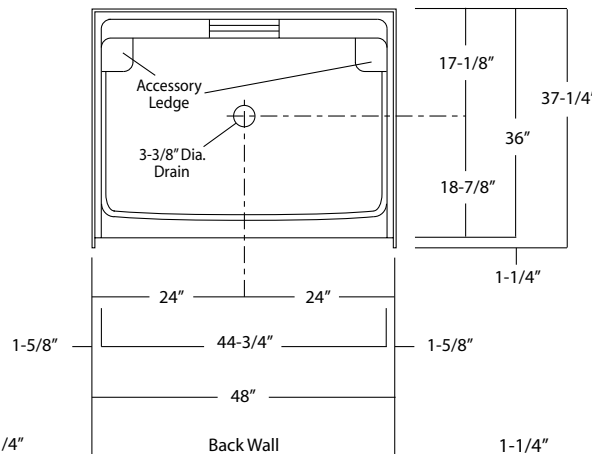
48-inch / Private Access / Reinforced Only



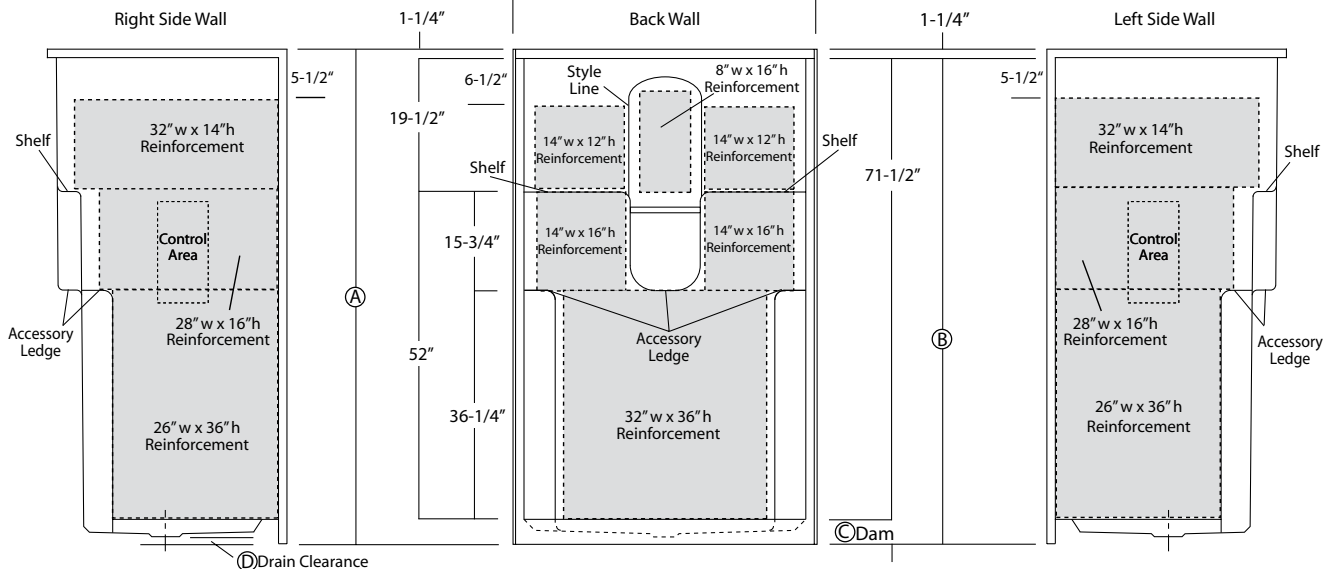
SH-4836 / 3SF
(full reinforcement wrap)
Model & Package Illustrated



	Std Unit	ABF Unit
A	76-3/4"	78-3/4"
B	75-1/2"	77-1/2"
C	4"	6"
D	1"	3"
E	-	-
F	-	-



Enclosure Size:
44-3/4" w (max) x 71-1/2" h (max)



Dimensions shown are maximum. Due to the nature of the materials involved, actual unit dimensions can vary (tolerances: +0 / -3/8 inch). Oasis reserves the right to modify or discontinue product and/or associated equipment without prior written or verbal notification or obligation.

Model ID	Package Code	Description
----------	--------------	-------------

SH-4836 (Std or ABF)	/ 3SF	48" x 36", center drain shower with 4" (std) or 6" (ABF) dam, and ActivLife 3-wall full reinforcement wrap package.
----------------------	-------	---

Package Notes:

1. Model available without listed package.
2. For REINFORCEMENT ONLY for horizontal bars (HUD/FHA-Fair Housing), see ActivLife "FH" package code.
3. Model available with a mid-level reinforcement wrap (with or without package components), see ActivLife "3SM" package code.
4. Model available with single-bar, 2-bar, or 3-bar packages, see ActivLife "BP1", "BP2", "BP3", and "BP5" package codes.
5. Model available with bar and seat packages, see ActivLife "TL" and "TLV" package codes.

